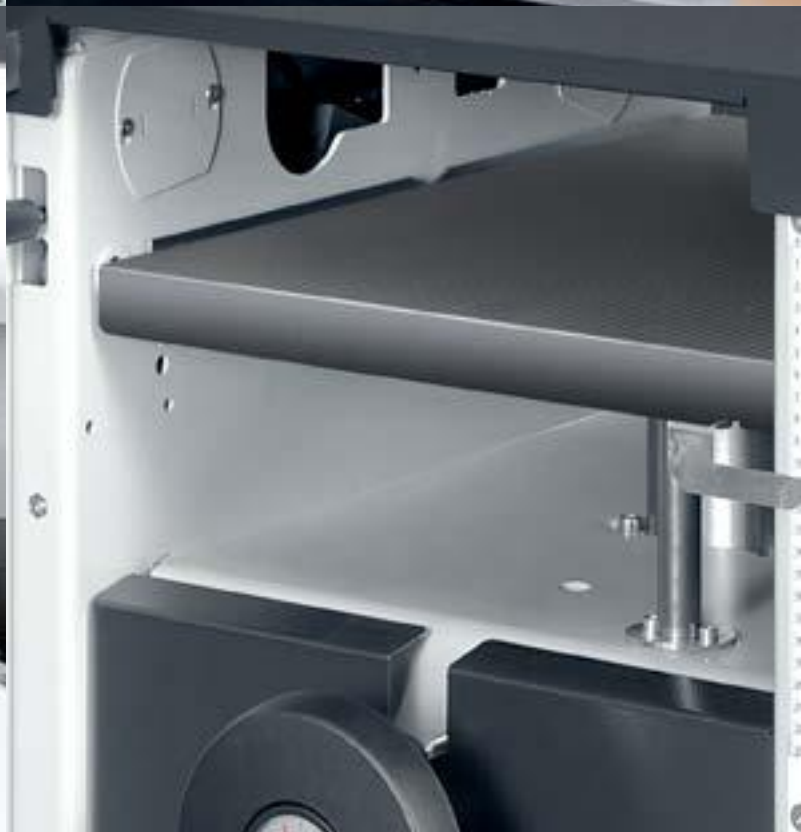




COMPACT MACHINES



English



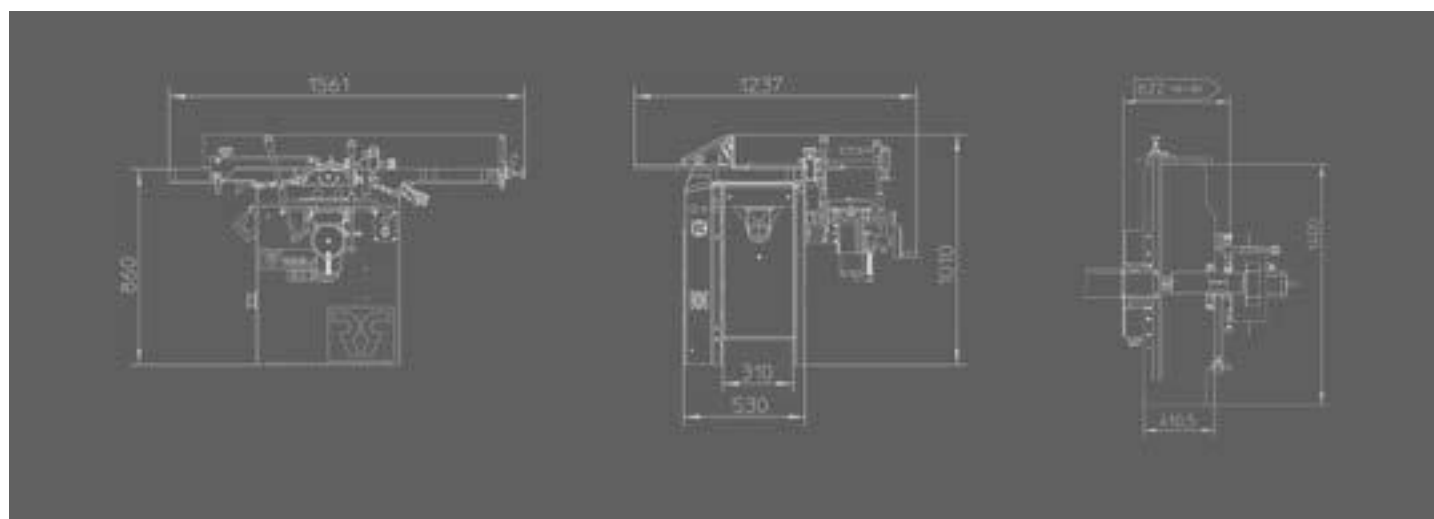
RS ROBLAND®
MADE IN BELGIUM



KS310 with options

KS310 Technical data

Weight	250 kg
Voltage	230 V Mono
	230 V - 3 Phase
	400 V - 3 Phase
Motor power (S6) Mono	2,2 kW / 3 hp
Motor power (S6) - 3 Phase	3,7 kW / 5 hp
Dust extraction diameter	100 mm
Knives	3
Dimensions knives	310 x 25 x 3 mm
Rotation speed	5500 RPM
Width of planor arbor	310 mm
Diameter planer arbor	70 mm
Dimensions planing fence	1300 x 150 mm
Tilting planing fence	90° - 45°
Max. chip removal per pass	4 mm
Total length of planing tables	1400 mm

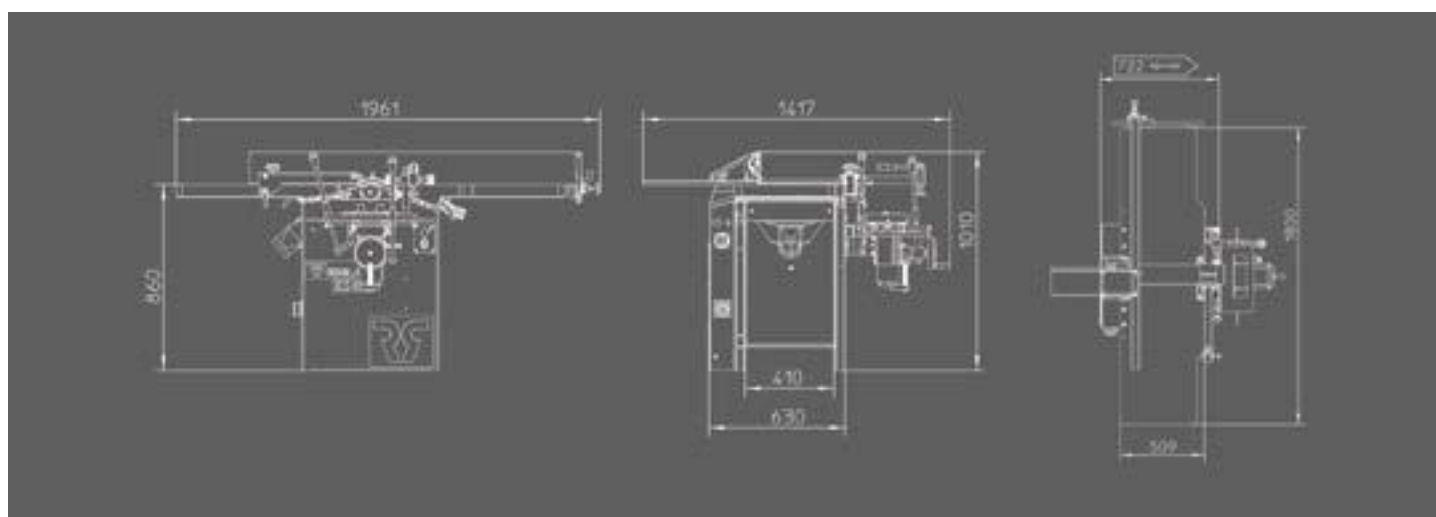




KS410 with options

KS410 Technical data

Weight	295 kg
Voltage	230 V Mono
	230 V - 3 Phase
	400 V - 3 Phase
Motor power (S6) Mono	2,2 kW / 3 hp
Motor power (S6) - 3 Phase	4,85 kW / 6,6 hp
Dust extraction diameter	100 mm
Knives	3
Dimensions knives	410 x 25 x 3 mm
Rotation speed	5500 RPM
Width of planor arbor	410 mm
Diameter planer arbor	70 mm
Dimensions planing fence	1500 x 150 mm
Tilting planing fence	90° - 45°
Max. chip removal per pass	4 mm
Total length of planing tables	1800 mm

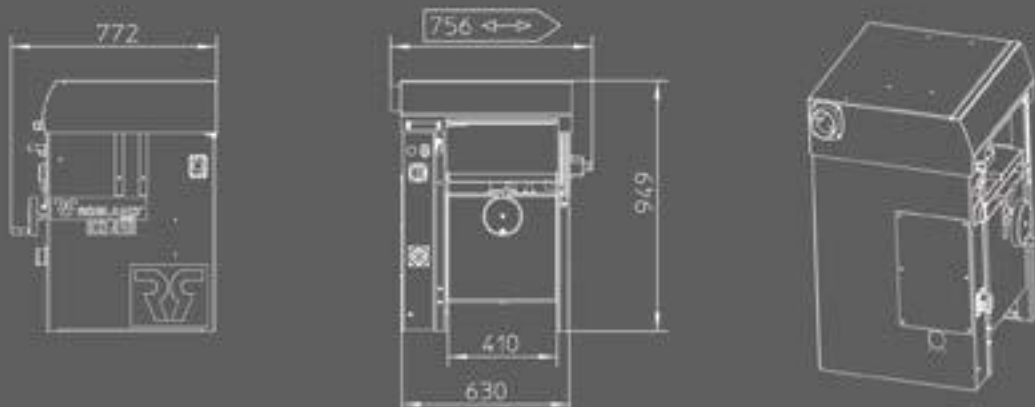




KD410 with options

KD410 Technical data

Weight	205 kg
Voltage	230 V Mono
	230 V - 3 Phase
	400 V - 3 Phase
Motor power (S6) - Mono	2,2 kW / 3 hp
Motor power (S6) - 3Phase	4,85 kW / 6,6 hp
Dust extraction diameter	100 mm
Diameter cutter block	70 mm
Knives	3
Dimensions knives	410 x 25 x 3 mm
Rotation speed	5500 RPM
Max. depth of cut	4 mm
Thicknesser width	410 mm
Height capacity thicknesser	230 mm
Dimensions thicknesser table	500 x 410 mm
Feeding speed	6 m/min.
Diameter feed rollers	30 mm



DIFFERENT CUTTER BLOCKS



STANDARD CUTTER BLOCK

For most people this cutter block offers the best price/quality ratio. The blades can be resharpened and are easy to replace thanks to a specific toolset, delivered with the machine.



TERSA CUTTER BLOCK

The machine can be equipped with a TERSA system, to allow for a fast exchange of the knives. The disposable TERSA blades are available in a wide selection to fit different types of wood.

The TERSA cutter block has a slightly lower noise level than the standard block.



SPIRAL CUTTER BLOCK

When processing hard wood types the spiral cutter block has a lower noise level and consumes less energy than a standard cutter block. The blades also typically last longer.

On hard wood the 3 rows of knives result in a high quality finishing.

Number of four-side cutting panels on spiral arbor: 52 on 310, 68 on 410

OPTIONS



HANDWHEEL WITH INTEGRATED ANALOGUE READ-OUT THICKNESSER TABLE (ON THE **KD410**)

Handwheel with integrated analogue readout for the thicknesser table. This mechanical readout offers even more comfort and precision than the standard ruler.

ACCESSORIES



WHEEL SET

With the wheel system consisting of two fixed wheels at one side and a swiveling wheel with steering handle at the other, you can easily move your machine.
(available on the **KD410**, **KS410**, **NXSD310** and **NXSD410**)



MORTISING UNIT ON **KS310** / **KS410**

The smooth and easy to operate unit can be removed from the machine within minutes. It also has 2 detachable handles, easy when machining large workpieces.



This brochure is for information purposes only. Robland reserves the right to modify machine configurations and specifications without prior notice. Standard configurations can change over time and by point of purchase. Please consult your local dealer for accurate and up to date information.

Robland NV

Kolvestraat 44
8000 Brugge - Belgium
Tel: +32 50 458 925
info@robland.com
www.robland.com



Follow us on Facebook
www.facebook.com/Roblandmachines



Follow us on Instagram
www.instagram.com/robland_nv



Follow us on YouTube
www.youtube.com/robland